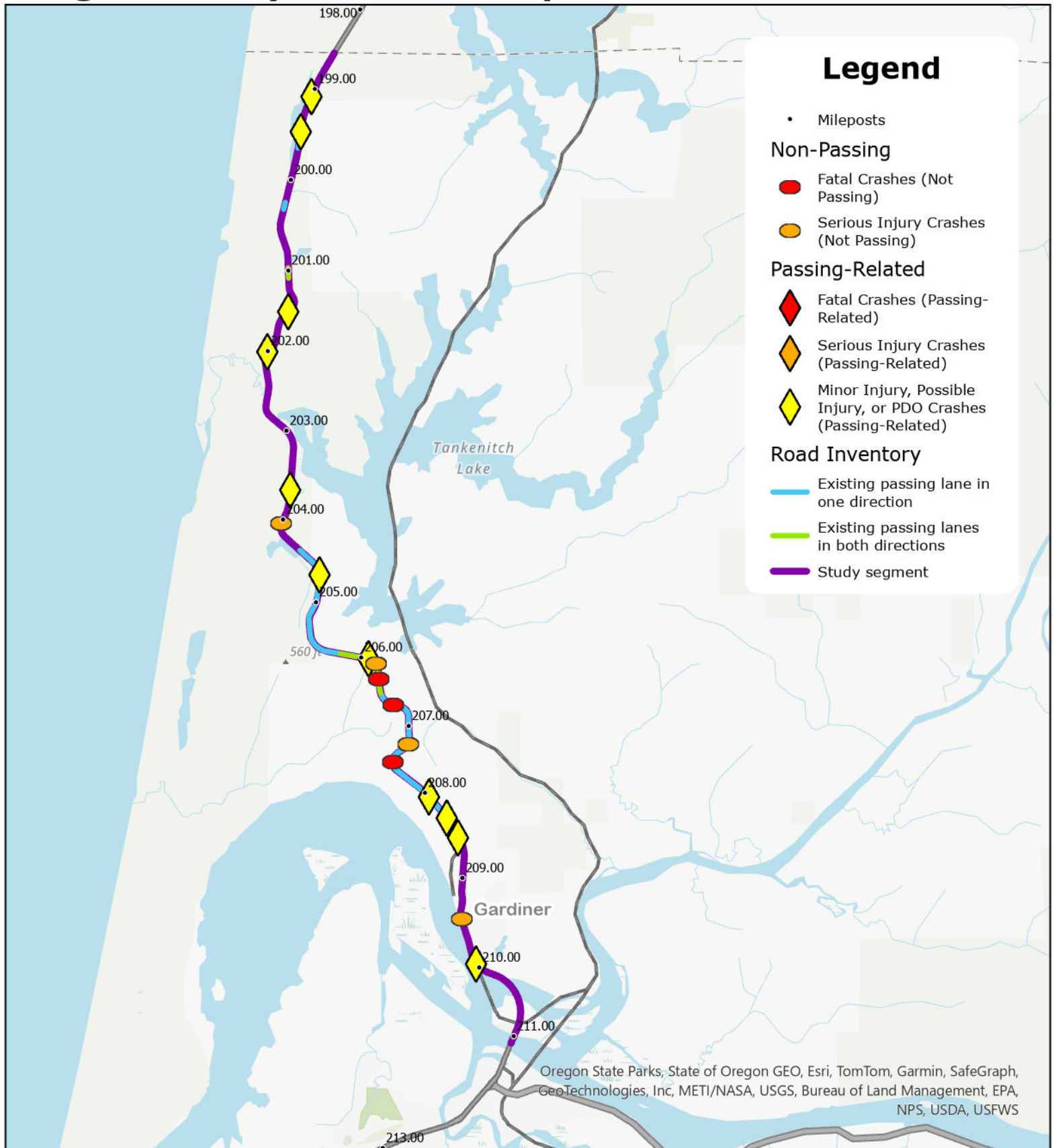
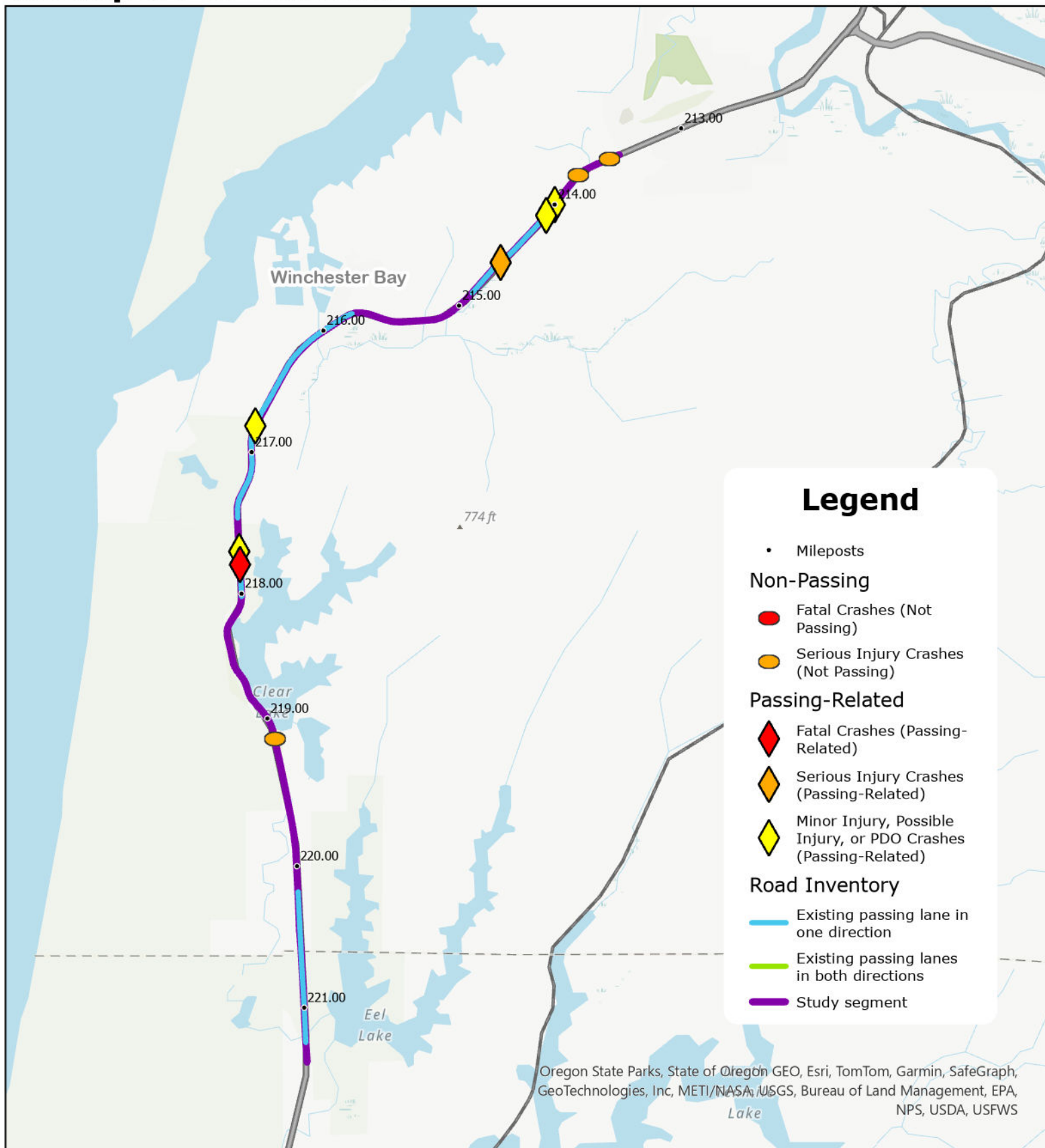


US 101-OR 42 Passing Lanes Study
Segment 101-A (MP 198.59 to 211.07)
Douglas County Line to Reedsport

DKS



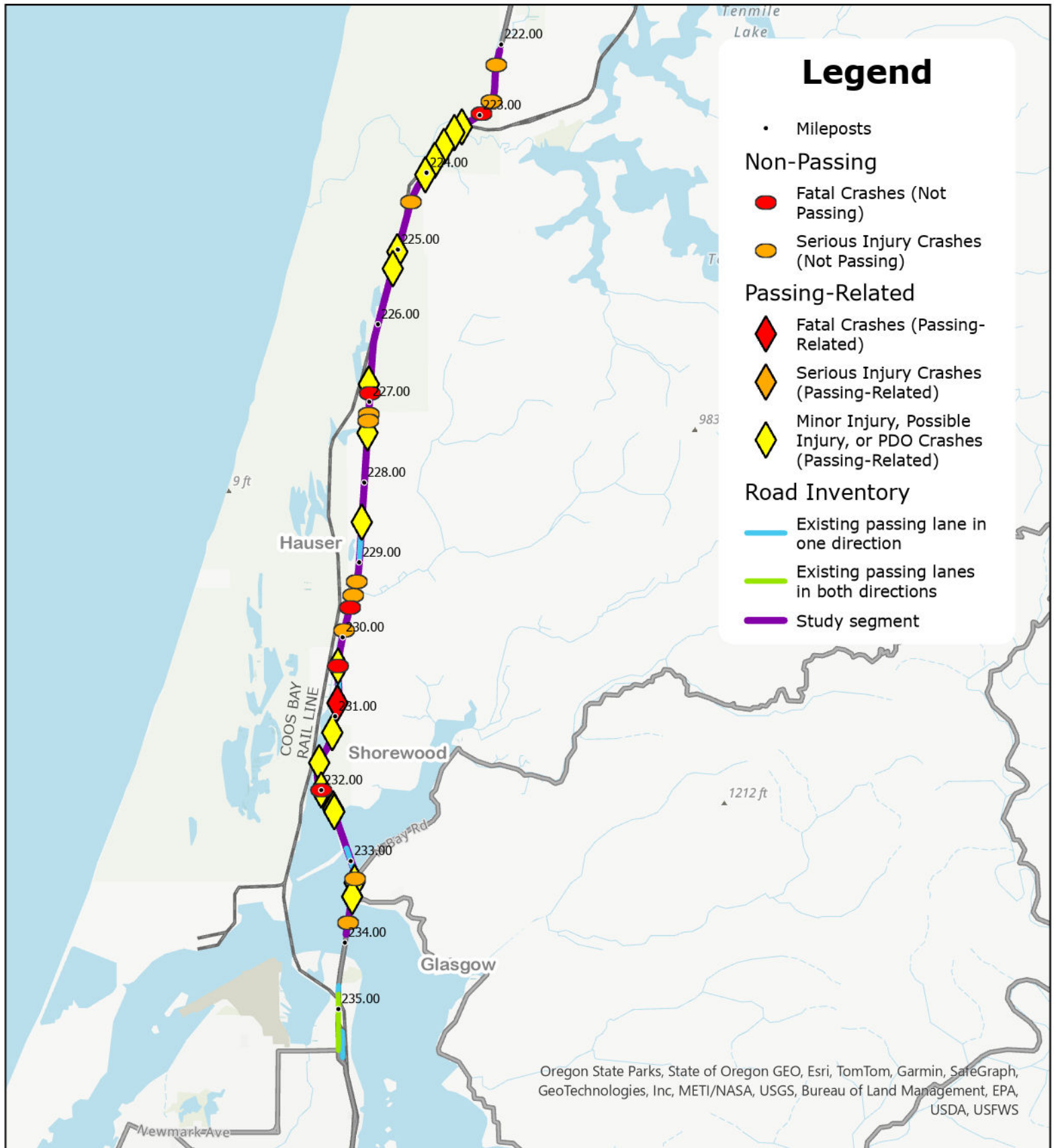
0 0.75 1.5 3 Miles



0 0.5 1 2 Miles

US 101-OR 42 Passing Lanes Study
Segment 101-C (MP 222.10 to 233.93)
Lakeside to North Bend

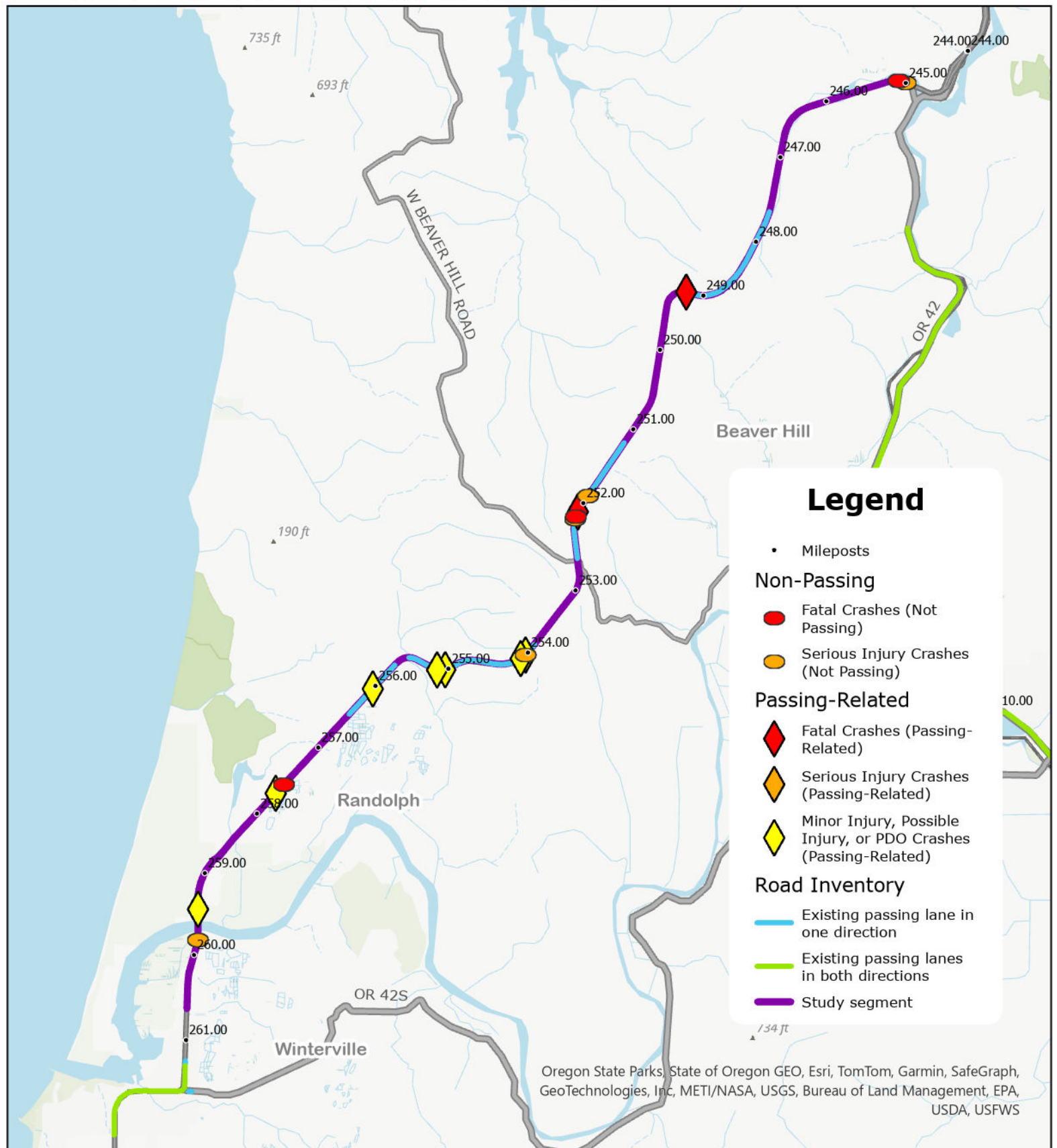
DKS



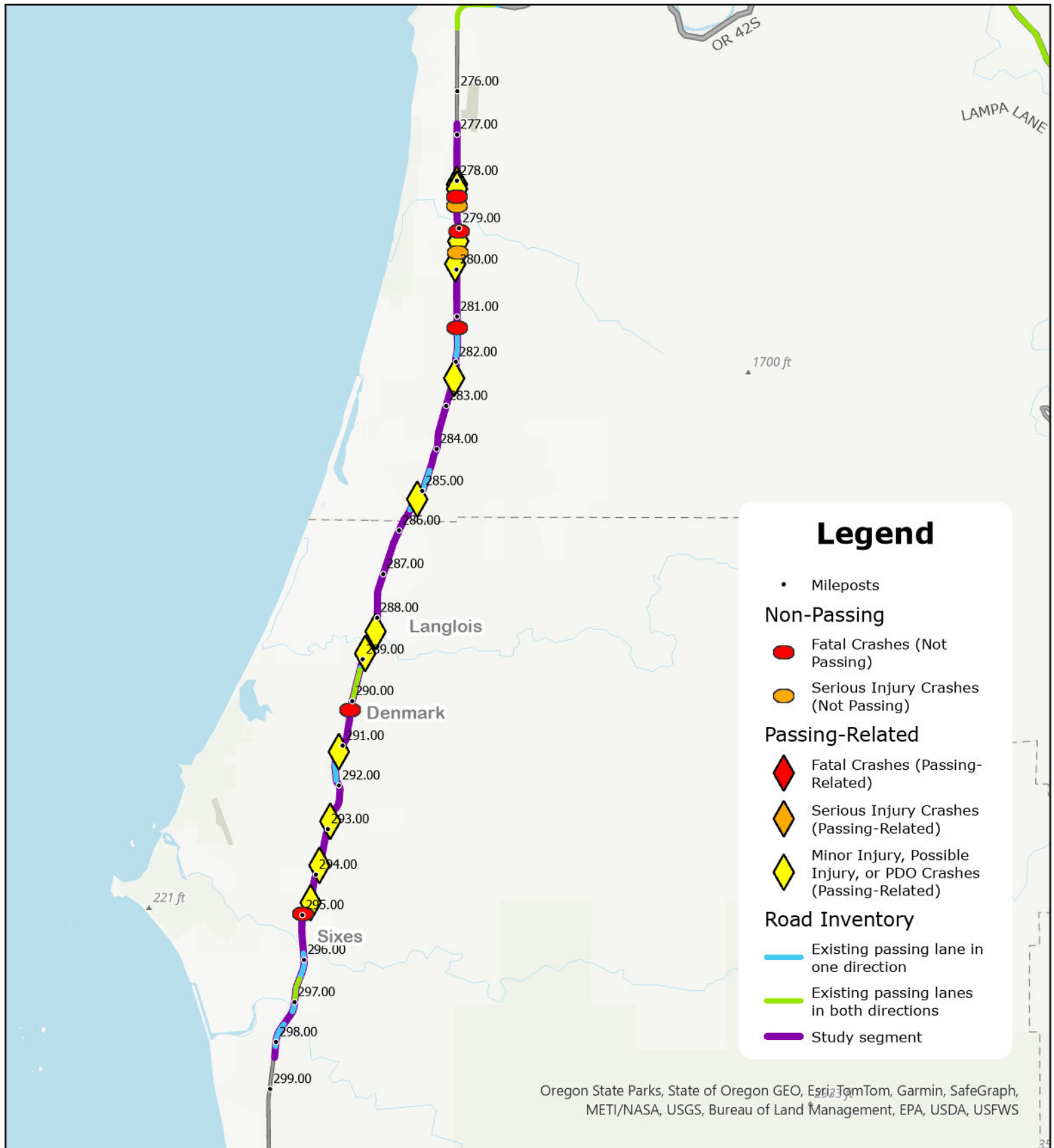
0 0.75 1.5 3 Miles

US 101-OR 42 Passing Lanes Study
Segment 101-D (MP 245.00 to 260.63)
US 101-OR 42 Junction to Bandon

DKS

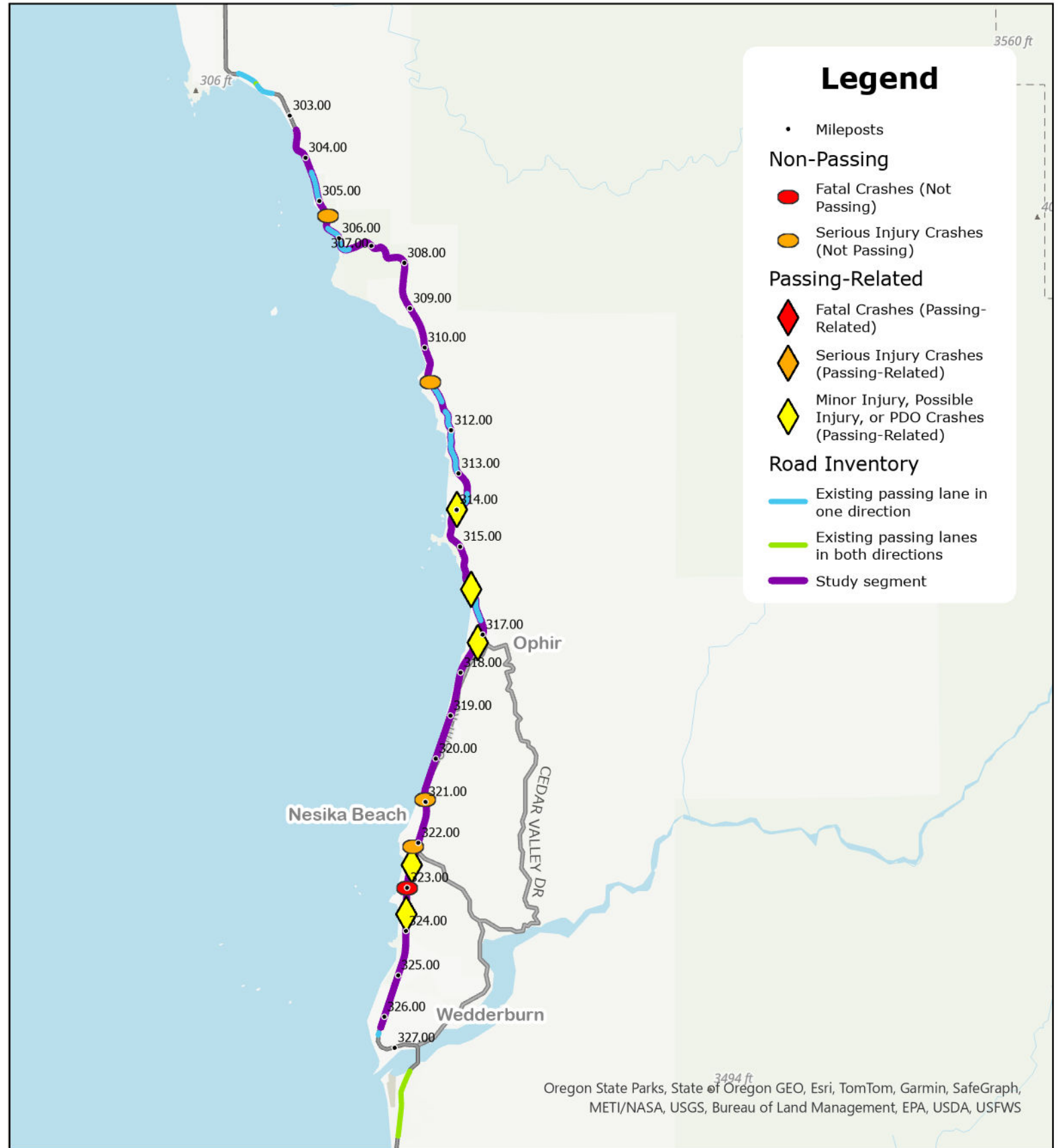


0 0.75 1.5 3 Miles



US 101-OR 42 Passing Lanes Study
Segment 101-F (MP 303.30 to 326.21)
Port Orford to Gold Beach

DKS



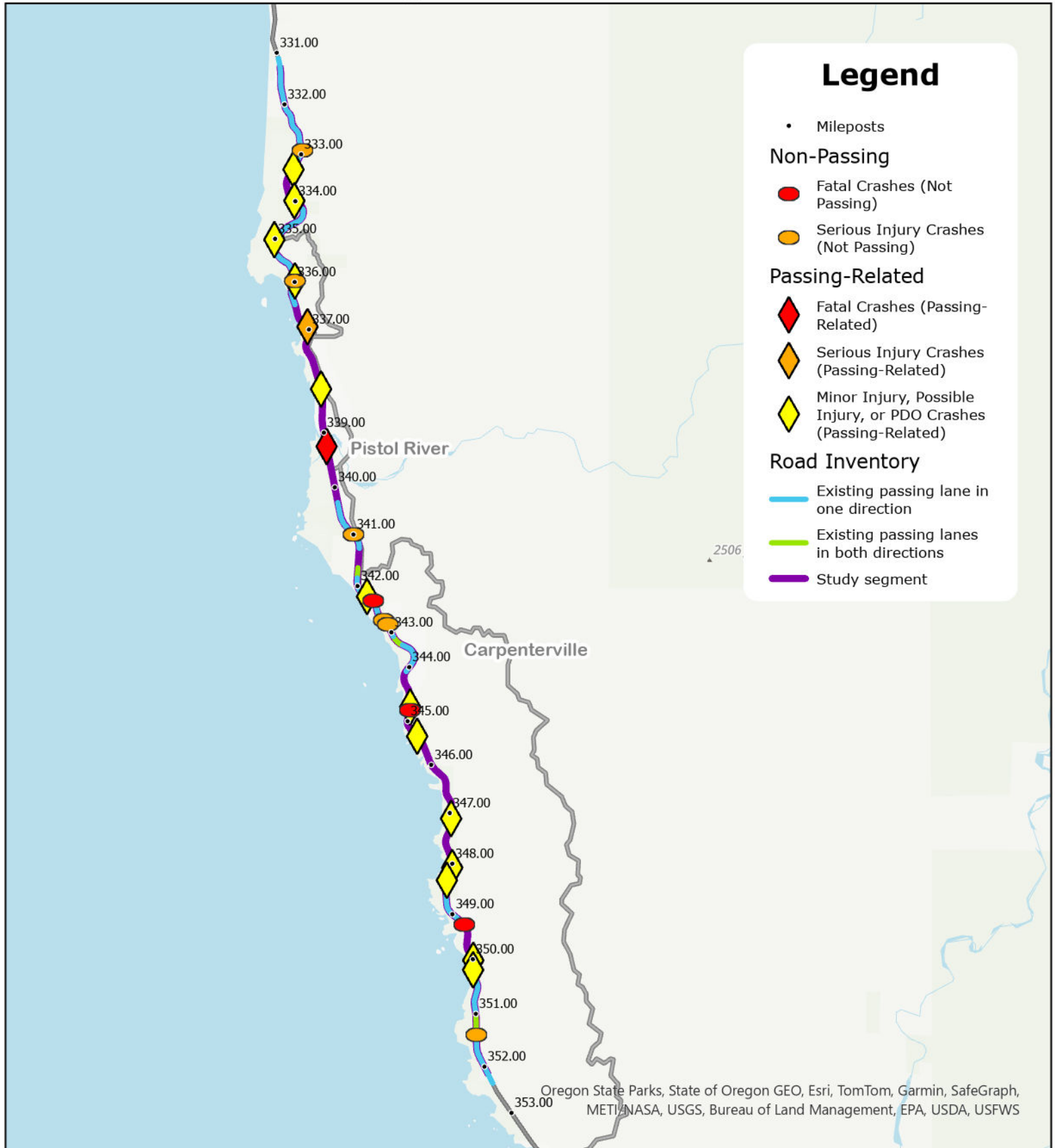
Oregon State Parks, State of Oregon GEO, Esri, TomTom, Garmin, SafeGraph, METI/NASA, USGS, Bureau of Land Management, EPA, USDA, USFWS



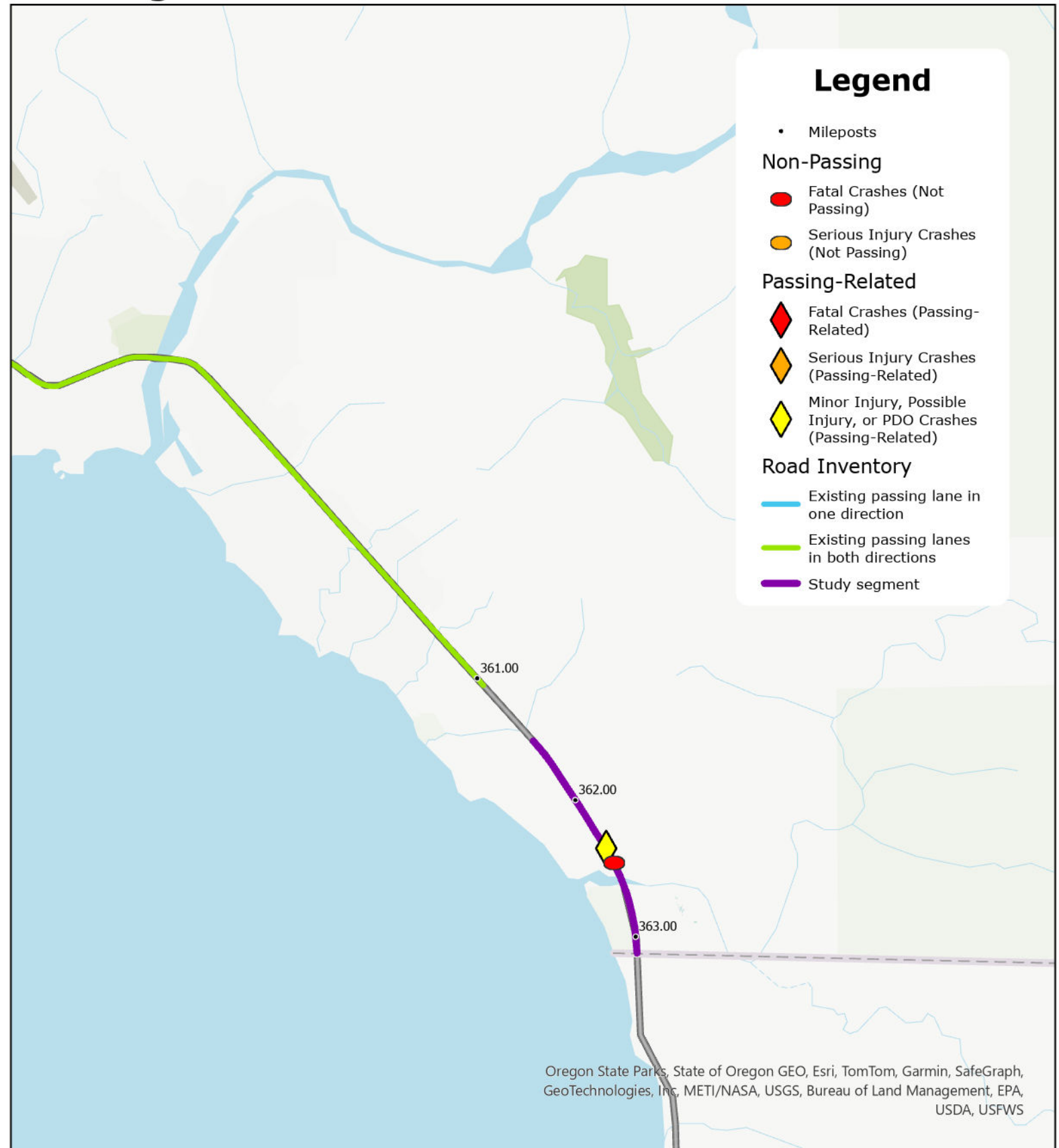
0 1.5 3 6 Miles

US 101-OR 42 Passing Lanes Study
Segment 101-G (MP 331.29 to 352.20)
Gold Beach to Brookings

DKS



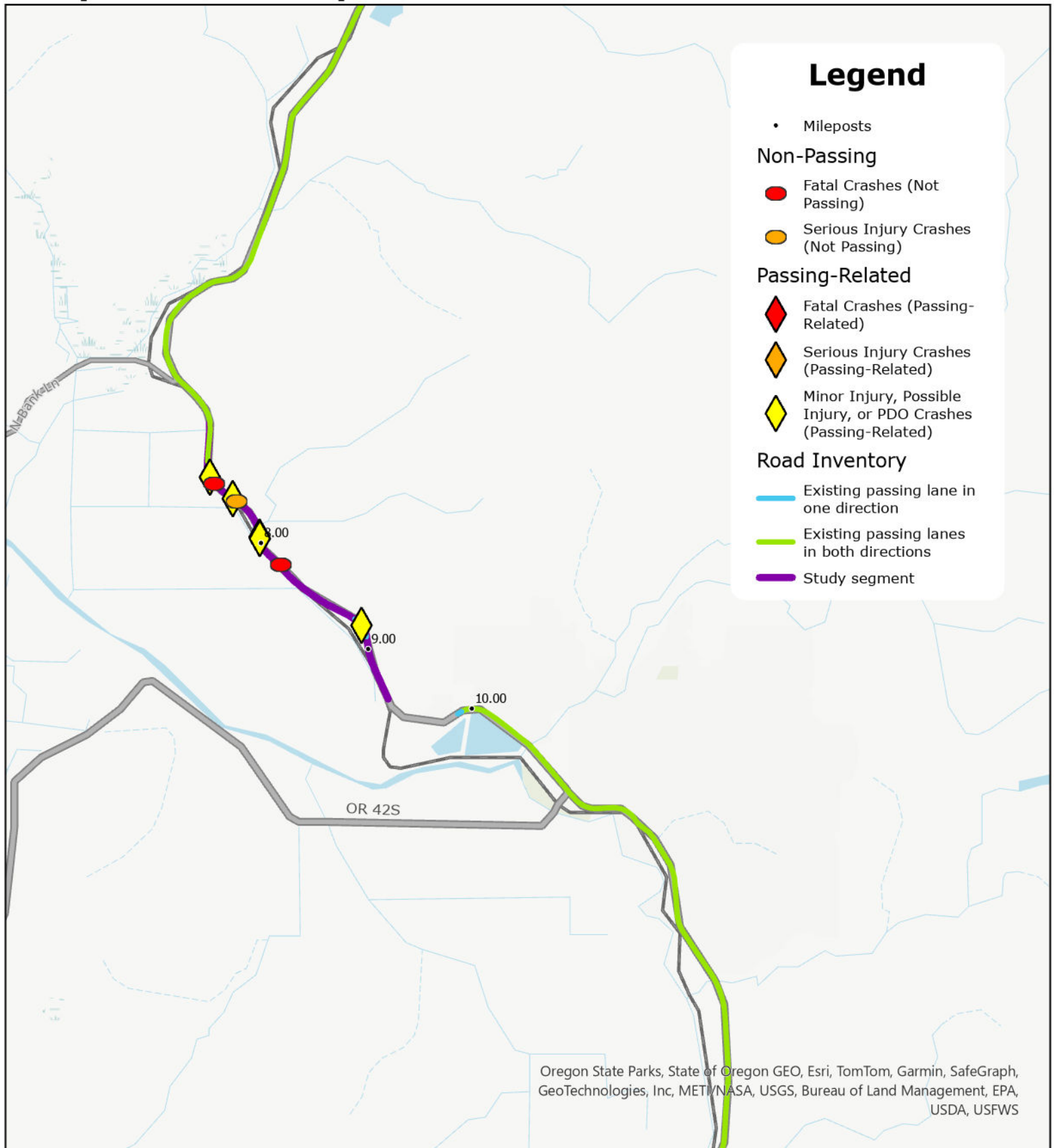
0 1.25 2.5 5 Miles



0 0.5 1 2 Miles

US 101-OR 42 Passing Lanes Study
Segment 42-A (MP 7.10 to 9.38)
Lampa Lane to Coquille

DKS



0 0.5 1 2 Miles

